



8 Yarraga Avenue ELLEN GROVE QLD

3  1  1 

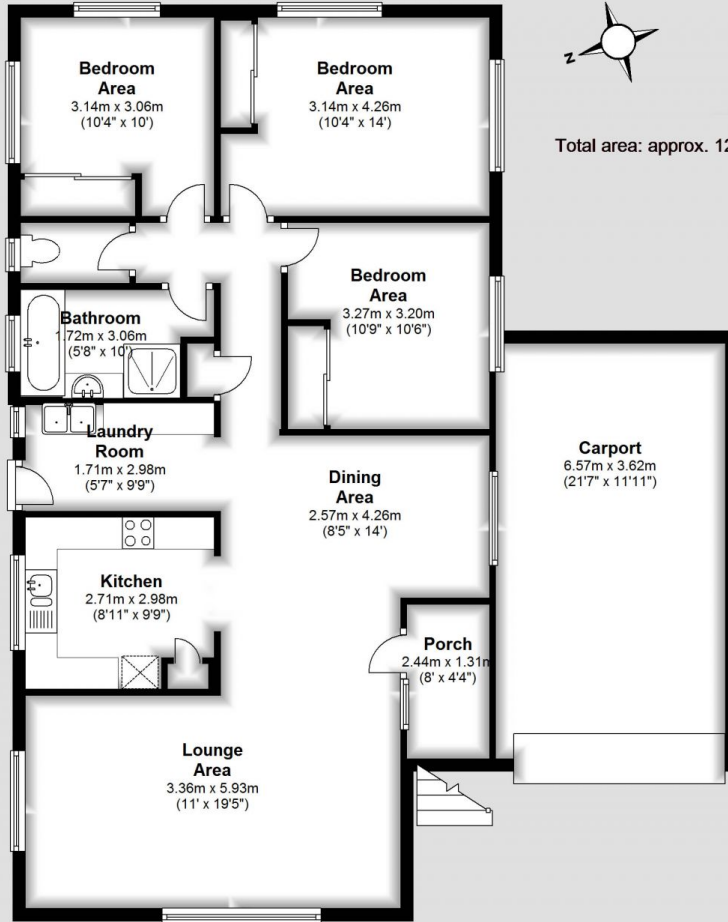
Discover a well-presented and inviting home tucked away in a serene cul-de-sac in Ellen Grove, featuring charming gardens that capture the eye. This gem of a location is not only peaceful but incredibly convenient, being a short walk from Carole Park State School and a variety of local amenities. Enjoy easy access to a public swimming pool, various public transport options, and the Richlands train station, all within a 5-minute drive. Plus, it's close to essential shopping and local parks for those weekend adventures.

View : <https://www.livingpm.com.au/7970434>



Emily Brown
0417 595 944

- Three large bedrooms with built-in wardrobes
- Open-plan living and dining area
- Timber floor boards
- Separate laundry room
- Spacious backyard
- Carport with front roller door



Total area: approx. 124.9 sq. metres (1344.0 sq. feet)

8 Yarraga Ave, Ellen Grove

This floor plan is not to scale. Dimensions are approximate & therefore should only be used for illustrative purposes.

www.fourwallsphotography.com.au