



6 Copping Court SINNAMON PARK QLD

3  1  1 

Come experience the ease of living in this meticulously 3-bedroom, 1-bathroom lowset haven at 6 Copping Court, Sinnamon Park.

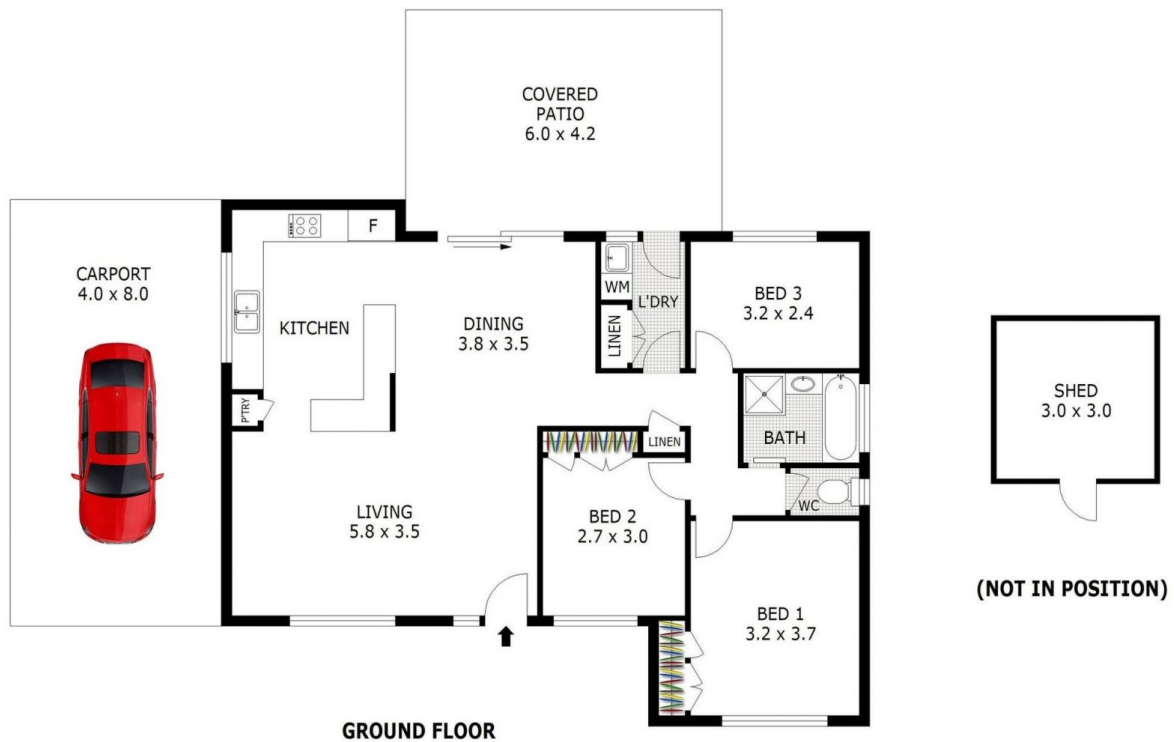
View : <https://www.livingpm.com.au/7980829>

Step inside to discover a fully revamped space, boasting a stunning Caesarstone kitchen adjacent to the living area. With a generously sized lounge, separate dining, and a central hallway leading to the additional bedrooms and spacious laundry, this home offers convenience and comfort in every corner.

Perfectly suited for a couple, small family, or retiree seeking single-level living, this property features a practical design and layout ideal for today's lifestyle. Nestled in a quiet cul-de-sac, the home boasts low-maintenance gardens and exceptional value in a rapidly evolving market.



Emily Brown
0420 984 052



Scale in metres. Indicative only. Dimensions are approximate. All information contained herein is gathered from sources we believe to be reliable. However we cannot guarantee its accuracy and interested parties should rely on their own enquiries.

Ground Floor	-	94 m ²
Carport	-	32 m ²
Patio	-	25 m ²
Shed	-	9 m ²
Total	-	160 m ²



6 Copping Court, Sinnamon Park